



Off-grid Solar Power Storage System

home-using / mini lighting / solar lamp

Lighting the World, Making the Future

Founded by experienced solar photovoltaic specialists under the investment from MACROLINK GROUP, with the vision of future, the mission of developing clean energy, and focusing on the solar pv power application one-stop solutions, Shandong Macrolink Intelligent Photovoltaic Co., Ltd. has always been devoted into solar energy's development and products R&D to optimize the pv system configurations and to increase the solar panels' efficiency.



Off-grid solar power system

Brief introduction

Macrolink's off-grid solar power system integrates the solar panels, controllers and inverters, batteries, brackets and accessories, which can operate all kinds of DC and AC domestic appliance such as the fans, lamps, phone, laptop, conditioners, refrigerators and so on. We also have the parts, the integrated off-grid solar power system, and the solar products for your choices.

To offer our customers with one-stop solar power solutions and the best after-sales services is our forever value, to help all the people to enjoy the free sun power is our forever mission.



Off-grid solar power system

Integrated system introduction (IS series)

The integrated solar power system makes the inverter, power-charging and discharging controller, and battery packaged in one case, which is better for transportation, saves the total cost and optimizing the system efficiency.

The actual configurations are customized according to customers' electricity demand, but we also have the standard off-grid solar power storage system of 3KW installed capacity.



Off-grid solar power system

Integrated system – 2.4kwh (MNE-12V20A500w2400wh)

Configurations

| Installed capacity (solar panel) | Inverter | Controller | Storage Battery (colloid) | Packaging (solar panels excluded) | Accessories |
|---------------------------------------|---------------------------------------|----------------|--------------------------------|--|-----------------|
| 250w*2pcs | 400w, 12v, DC pure sine wave inverter | MPPT, 12v, 20A | 100Ah*2pcs | 600*560*600 mm G.W. 40kg | cables, breaker |



Off-grid solar power system

Integrated system – 3.6kwh (MNE-24V40A530w3600wh)

Configurations

| Installed capacity (solar panel) | Inverter | Controller | Storage Battery (colloid) | Packaging (solar panels excluded) | Accessories |
|---------------------------------------|--------------------------------------|---------------|--------------------------------|--|-----------------|
| 265w*2pcs | 600w,24v, DC pure sine wave inverter | MPPT, 24v,40A | 150Ah*2pcs | 600*560*600 mm G.W. 40kg | cables, breaker |

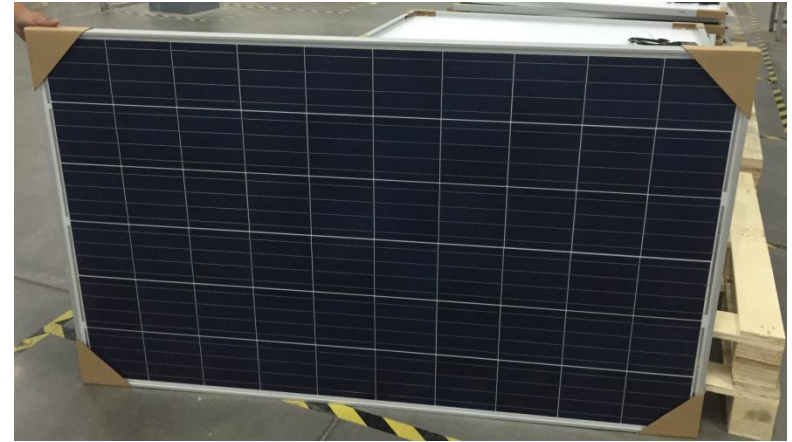
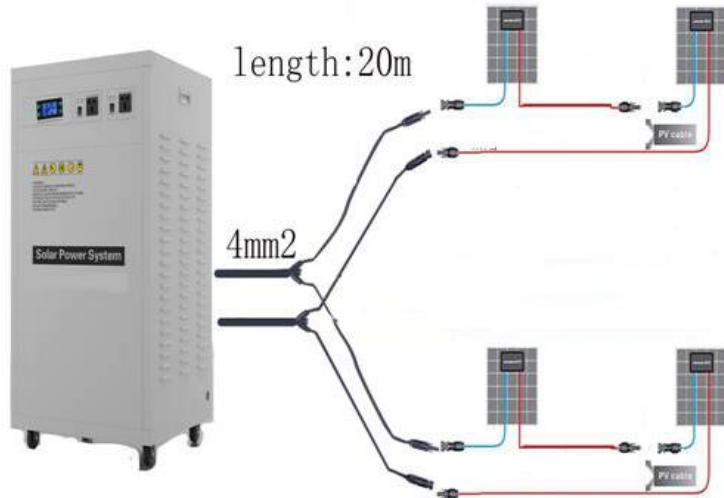


Off-grid solar power system

Integrated system – 9.6kwh (MNE-24V60A1260w9600wh)

Configurations

| Installed capacity (solar panel) | Inverter | Controller | Storage Battery (colloid) | Packaging (solar panels excluded) | Accessories |
|---------------------------------------|---------------------------------------|---------------|--------------------------------|--|-----------------|
| 315w*4pcs | 1000w,24v, DC pure sine wave inverter | MPPT, 24v,60A | 200Ah*4pcs | 670*640*1150 mm G.W. 310kg | cables, breaker |

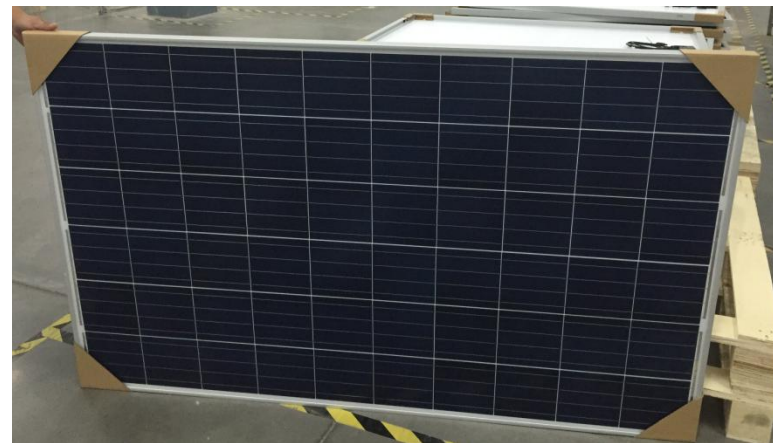
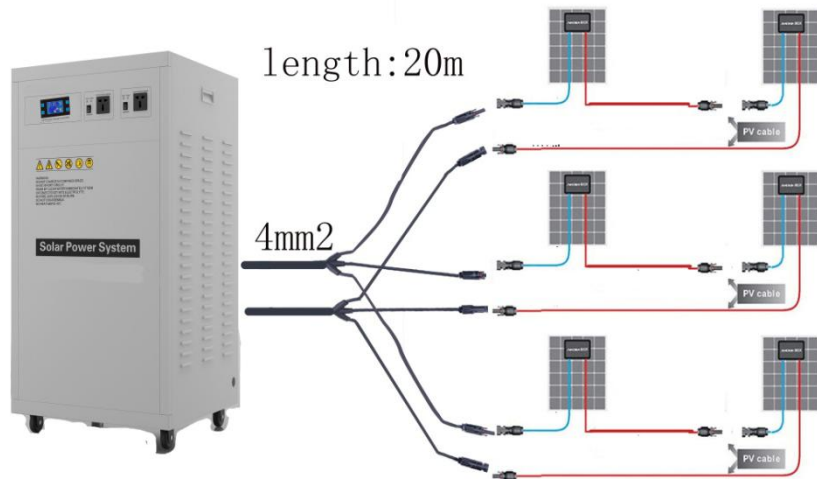


Off-grid solar power system

Integrated system – 12kwh (MNE-24V60A1890w12000wh)

Configurations

| Installed capacity (solar panel) | Inverter | Controller | Storage Battery (colloid) | Packaging (solar panels excluded) | Accessories |
|---------------------------------------|---------------------------------------|---------------|--------------------------------|--|-----------------|
| 315w*6pcs | 2000w,24v, DC pure sine wave inverter | MPPT, 24v,60A | 250Ah*4pcs | 670*640*1150 mm G.W. 355kg | cables, breaker |

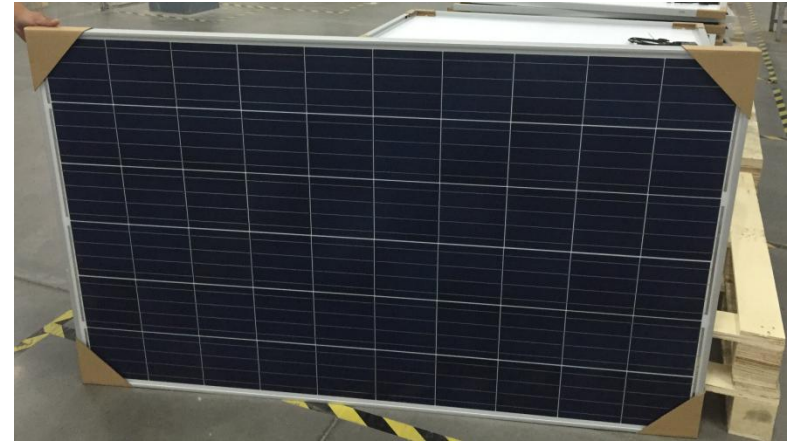
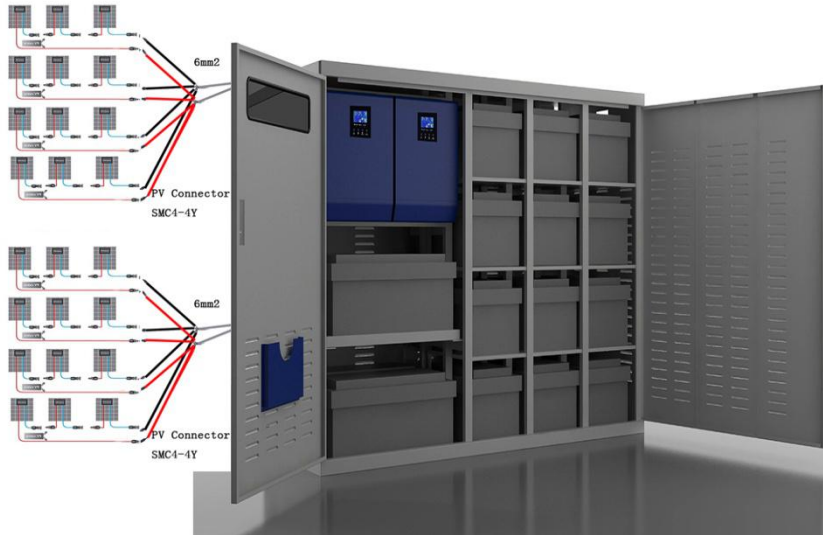


Off-grid solar power system

Integrated system – 48kwh (MNE-48V160A8190w48000wh)

Configurations

| Installed capacity (solar panel) | Inverter | Controller | Storage Battery (colloid) | Packaging (solar panels excluded) | Accessories |
|---------------------------------------|--|-----------------|--------------------------------|--|-----------------|
| 315w*26pcs | 8000w, 48v, DC pure sine wave inverter | MPPT, 48v, 160A | 250Ah*16pcs | 1900*640*1200 mm G.W. 963kg | cables, breaker |



Off-grid solar power system

Mini lighting system (MNE-SL6045)

| <i>Configurations</i> | | | | |
|---|---------------------------------------|--|--|-------------------------------------|
| <i>Installed capacity (solar panel)</i> | <i>Inverter</i> | <i>Storage Battery (colloid)</i> | <i>Packaging (solar panels excluded)</i> | <i>Accessories (optional)</i> |
| 60w | 200w, 12v, DC pure sine wave inverter | 12V, 45Ah | 350*248*400 mm G.W. 16.7kg | lamp, adapter |

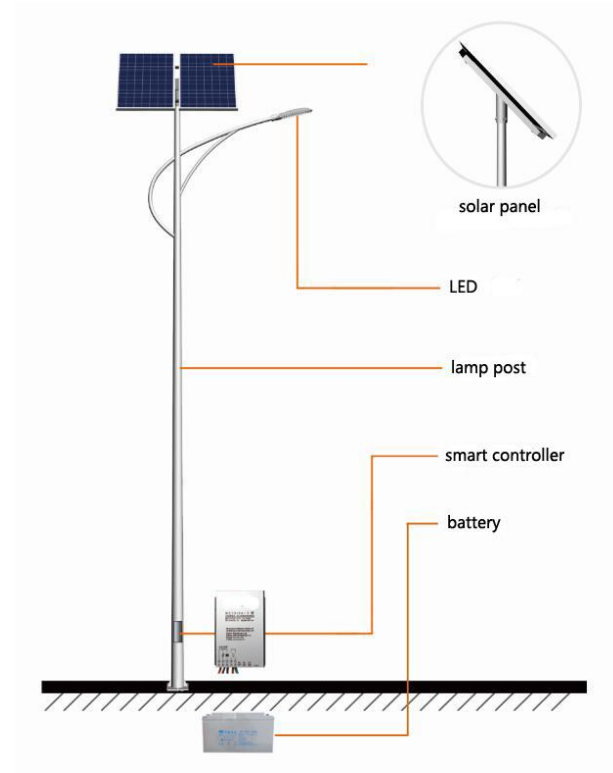


Off-grid solar lamp

separated solar lamp (MNE-SSL2080)

Configurations

| Power | Solar panel (poly) | Storage battery (colloid) | Lamp-post | Lighting | Controller |
|-------|--------------------|---------------------------|--|----------------------------------|------------------|
| 20w | 90w | 80Ah | Galvanizing Carbon-steel Height: 5-10m | 12 hours per day, 3-5 rainy days | smart controller |
| 30w | 135w | 120Ah | | | |
| 40w | 180w | 150Ah | | | |
| 50w | 100w*2 | 100Ah*2 | | | |
| 60w | 130w*2 | 120Ah*2 | | | |
| 80w | 170w*2 | 150Ah*2 | | | |



Off-grid solar lamp

integrated solar lamp (MNE-ISL1040)

Configurations

| Power | Solar panel (mono) | Battery (lithium) | Lamp-post | Lighting | Controller |
|-------|--------------------|-------------------|---|---|---------------------|
| 10w | 20w | 20Ah | 3.5-6m (Galvanizing Carbon-steel) | 15hrs in full power and 30hrs in half power per day, 5-6 rainy days | smart controller |
| 20w | 40w | 20Ah | | | |
| 30w | 60w | 24Ah | | | |
| 40w | 60w | 24Ah | 6-8m (Galvanizing Carbon-steel) | | |

Battery, controller, solar panel



Off-grid solar lamp

Wall-mounted solar lamp (MNE-WSL0730)

Configurations

| Power | Solar panel (poly) | Battery (lithium) | Lamp-post | Lighting | Controller |
|-------|--------------------|-------------------|----------------|----------------------------------|------------------|
| 7w | 30w | 20Ah | wall or pillar | 12 hours per day, 3-5 rainy days | smart controller |
| 10w | 40w | 30Ah | | | |
| 15w | 50w | 40Ah | | | |
| 20w | 70w | 20+30Ah | | | |
| 25w | 80w | 30Ah*2 | | | |
| 30w | 90w | 30+40Ah | | | |

Wall-mounted



Why to choose Macrolink?

A

Professional solar photovoltaic specialists with 10yrs R&D experiences, with four solar products patents.

B

Advanced factory with 700MW producing capacity and self-built one-stop supply chain.

C

Strategic partnership with prestigious end-customers as the Hanergy and MACROLINK real estate developers.

D

24hrs and one-to-one after-sales services and strong financial support from the MACROLINK GROUP with eight listed enterprises.





新华联智能光伏

MACROLINK INTELLIGENT PV

Contact us

Web: <http://www.xhlxny.com>

E-mail: customerservice@mneipv.com

Tel: +86-635-7130666